



"It's nothing to worry about, Mrs Grilph — just cut down on heavy shoplifting."

## Chess

### The purple people-beater

THE ANNUAL congress at Hastings, England, lived up to its worldwide reputation once again this year by turning out some gruelling chess and some appalling weather. As usual, there were several events running concurrently: the Premier 15-player Grandmaster tournament, the Challengers tournament, and

various Christmas and New Year specials.

Sweden's Ulf Andersson capped his fine victory in Argentina recently by winning the Grandmaster event with 9½ points, ahead of second placegetters Jonathan Speelman (England), Istvan Csom (Hungary), and Evgeny Vasukov and Alexander Kochiev

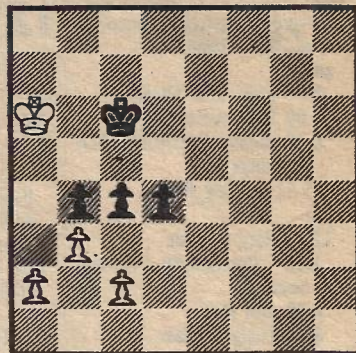
(USSR), all on 8½. Speelman, last year's British champion, played innovatively as always, only this time he combined it with an impressive tally of points which left him just half a point short of the GM norm.

I went to Hastings in the hope that a last minute non-arrival might create a vacancy for a late entrant in the Premier, but as all the participants turned up I played instead in the Challengers tournament, an (approximately) 100-player event with a reputation for being one of the strongest open Swisses in the world. This year the strength in depth was high, with hordes of highly rated players flocking from the continent.

Austrian Olympiad player Walter Wittman and I took an early lead with 4½/5 each, but in round seven he met disaster clothed in purple trousers and matching bow tie. Dark horse Igor Zilber, now living in Israel but formerly of Riga in the USSR, went on to beat me and win the tournament, although — in the early rounds, at least — his mode of dress attracted more attention than his chess!

The other New Zealander at Hastings, Auckland Paul Spiller, had a patch of bad luck in the final round. But can you blame him? For two weeks we had been subjected to blizzards, kneedeep snow and ice, and temperatures as low as minus 7.2. Then Paul gets paired against some English junior, and the kid attacks him for six hours, and suddenly in a pawn ending plays ...c4 to reach the diagrammed position.

Nasty English Junior



Fatigued New Zealander

White to play: can he draw?

Well, 1...d3 is threatened, but with 1.bxc4 Kc5 2. Ka5 Kxc4 3. Ka4 Kc3, the d-pawn will queen. So fatigued New Zealander resigned.

This was unfortunate, because the position is in fact a fairly straightforward draw, which I noticed as I was hovering around watching the game — but ohhhh, powerless to say anything!

The correct defence goes: 1.bxc4 Kc5 2. Ka7! (2. Ka5 and 2. Kb7 work just as well, but the text painfully shows just how drawn the endgame was) 2...Kxc4 3. Kb6 Kc3 4. Kc5 Kxc2 5. Kxd4, and drawing. The trick was to chase the d-pawn.

The Pot Belly Stove Co. Ltd.

#### AUTHORISED STOCKISTS

KAITIAI - Apex Plumbers KAIKOHE - Stewart Timber & Hardware, W. S. Ambler KERI KERI - Gibson's Irrigation & Machinery WAIPAPA - Stewart Timber & Hardware RUSSELL - Russell Auto Marine WHANGAREI - Carter Holt, Bob Philpot, The Chimney Stack DARGAVILLE - Bycroft Bros MAUNGATUROTO - Stewart Timber & Hardware WELLSFORD - Stewart Timber & Hardware WARKWORTH - Allied Farmers MATAKANA - Ken Burke OREWA - Stewart Timber & Hardware NORTH SHORE - Dalbeth Furnishers, Grant McKay, Winstones AUCKLAND CITY - Dalbeth Furnishers, Parkinson & Bouskill, The Heating & Environmental Centre, Outdoor Emporium, Modnart Products, The Hood Centre, Winstones WIRI - Parker Hardley Merchants PUKEKOHE - J. H. Brewster HUNTLY - Ellis & Burnand HAMILTON - Odmins, Ellis & Burnand, New Zealand Plumbers Merchants Soc., Mout Plumbing MATAMATA - H. N. McKenzie & Son, Taupo Totara Timber PAEROA - Taupo Totara Timber CAMBRIDGE - Taupo Totara Timber TE AWAMUTU - Smyth Bros & Boryer TE KAUWHATA - Ellis & Burnand OTOROHANGA - Otorohanga Timber Co TAUMARUNUI - Dalgetys, R. Cosford THAMES - Brokenshire & Ross WHITIANGA - Bay Supplies WAHI - Provincial Plumbers TAURANGA - F. E. Malcolm, Tauranga Building & Display Centre, Tauranga Trade Supplies MOUNT MAUNGANUI - Mount Timber & Hardware TE PUKE - Kanapine Timber WHAKATANE - S. S. Shapely & Son, Odmins EDGECOMBE - Riverslea Trading Soc. ROTORUA - The Home Improvement Centre, Taupo Totara Timber, D. Henry & Co. PUTARURU - Taupo Totara Timber TOKOROA - Taupo Totara Timber TAUPO - Fred's Home Appliances, Odmins GISBORNE - J. S. Allan & Sons, Gisborne Solar Centre WAIROA - McCorkindale & Cawston NAPIER - Carter Holt, Odmins, N.Z.P.M. Soc M.S.D. Spiers HASTINGS - B. D. Lilley, Chas Bone WAIPUKURAU - Carter Holt MASTERTON - Groombridge Plumbers, Ballinger Industries CARTERTON - Wairarapa Plumbers NEW PLYMOUTH - Flyger & Carter, Hughsons Hardware, N.Z.P.M. Soc HAWERA - Bennett & Sutton STRATFORD - Pennial Jordan & Watson WANGANUI - Zip Wholesalers PALMERSTON NORTH - Ramada Home Imp. Centre, Felvins, N.Z.P.M. Soc, Winstones LEVIN - Felvins, Plumbing Requirements PARAPARAUMU - The Heating Centre PORIRUA - Odmins, N.Z.P.M. Soc UPPER HUTT - Zip Wholesalers, Odmins LOWER HUTT - N.Z.P.M. Soc., Garth Roofing & Heating, Southern Hardware WELLINGTON - C. W. Martin & Co. Odmins BLENHEIM - Winstones, The Ceramic Centre. NELSON - P. & M. Fireplaces, Neale & Haddow TAKAKA - Wrightson Builders Supplies MOTUEKA - Wrightson Builders Supplies KAIKOURA - S. & T. Harris & Sons GREYMOUTH - P. R. Wilkins ASHBURTON - Crum Bros CHRISTCHURCH - Thomas Brown, George Fry & Sons, The Heating Centre RANGIORA - McAlpines LINCOLN - Associated Heating TIMARU - The Canterbury Farmers Co-op, Robt Begg ALEXANDRA - John M. Fraser & Co. John Edmond DUNEDIN - John Edmond, The Heating Centre, Fletchers MOSGIEL - Jac's Hardware OAMARU - M. J. Kippenberger QUEENSTOWN - A. H. Spykerbosch BALCLUTHA - John M. Fraser GORE - McManus Heating INVERCARGILL - John Edmond, Southland Heating, Briscoes.

AVAILABLE NOW THROUGHOUT NEW ZEALAND



SCHOONER

### THE ELEGANT 'SCHOONER' POT BELLY STOVE

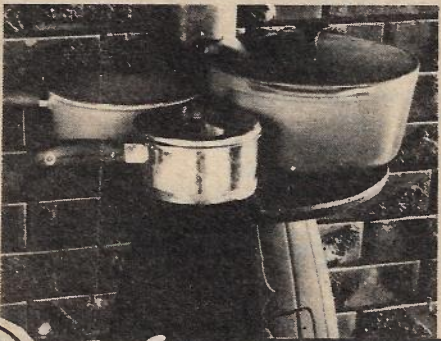
TO WARM YOUR HOME FOR YOUR FRIENDS AND FAMILY.

Discover how the unique style of the "Schooner" Pot Belly Stove can become the focus of your home — a sign of friendship and relaxation in today's busy world.

The safe friendly heat soon radiates throughout your home creating a warm and welcoming atmosphere in any house — large or small.

The "Schooner" adds charm and character to any home and is easily installed in new or existing homes. Send for the brochure for complete and clear installation instructions.

Stove with cook top accessory.



With water heating and cooktop accessories available the Schooner Pot Belly Stove becomes a real power saver as well.

- 77.5% thermal efficiency
- Design maximises secondary combustion
- Fully approved by N.Z. Insurance Council
- Burns any solid fuel
- Large opening front door — watch the fire
- Safe and simple to operate
- Comes complete with stainless steel flue kit
- Optional water heating unit — simple to install
- Optional cooktop for cooking meals
- Simple installation

Fully informative colour brochure.

Post the coupon now and receive our extremely informative colour brochure with complete installation details. And see the "Schooner" at your nearest dealer listed alongside.

The Pot Belly Stove Company Limited  
P.O. Box 40029, Glenfield,  
AUCKLAND, 10.

Name .....

Address .....

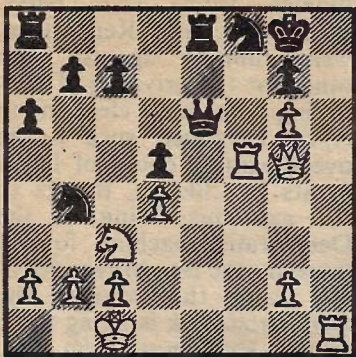
The Pot Belly Stove Co. Ltd.

P.O. Box 40029, Glenfield, AUCKLAND, 10.

1 Colway Place, Glenfield, AUCKLAND, 10. Telephone 445-591 or 446-490

Australian Master Distributor: General Distributors Pty Ltd. G.P.O. Box 22 Sydney, N.S.W., Australia.

J. Sanz



A. Kosten

Sanz was one of the many pre-tournament favourites who were quickly swallowed up in the depths of the tourney. In round seven he surfaced nearer the top boards, only to succumb to a kingside mating attack.

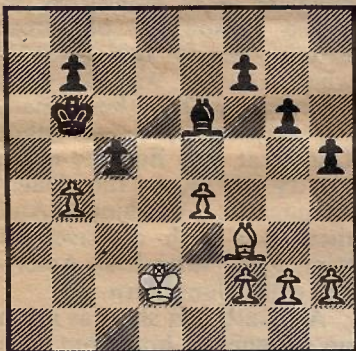
1.Rh8 ch! Resigns. Mate is unpreventable after 1...Kxh8 2.Rxh8 ch! Rxf8 3.Qh5 ch, followed by 4.Qh7 mate.

\* \* \*

A DECEPTIVE position occurred in a recent club match between Charlton and Gravesend in the Kent County Cup. My own club, Charlton, won the match, but on board two a hectic time-scramble resulted in the following position being sent up for adjudication.

What should the result come back as? (By the way, White is claiming a draw.)

L. S. Blackstock (Charlton)



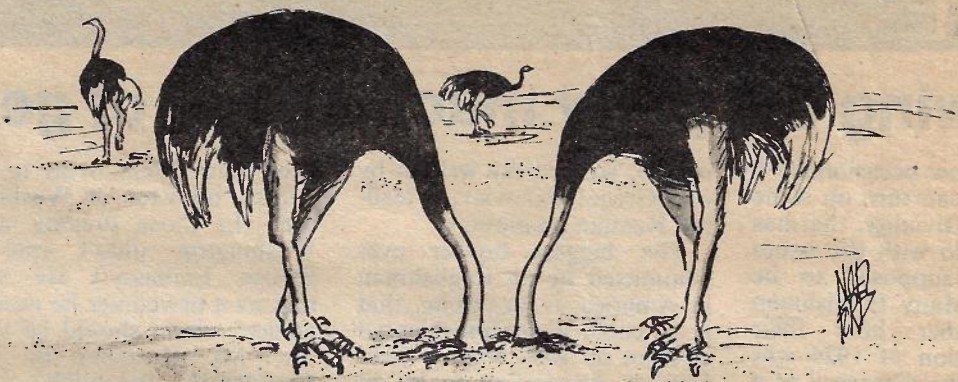
C. R. Chandler (Gravesend)

White to move. Who is better?

Amusingly, the position (by pure accident!) turns out to be a winning one for Black. If Chandler tries 1.Kc3 the position would be dead drawn if it were not for 1...Bg4!, swapping bishops in order to reach a simple pawn endgame where Black has an outside passed pawn, eg. 2.Bxg4 hxg4 3.f4 gxf3 ep 4.gxf3 cxb4 ch 5.Kxb4 g5! 6.Kc4 Kc6, and Black's King trundles off to the kingside, while his outside b-pawn decoys the White monarch.

So Chandler must prevent ...Bg4 but the tempi wasted allow Blackstock's King a domineering post, viz, 1.bxc5 ch Kxc5 2.h3! Kd4! and once again the b-pawn gallops up the board — and with Black's king and bishop ideally posted, the decoy on the queenside must allow a decisive penetration of White's kingside pawns.

MURRAY CHANDLER



"We have to be careful . . . Arnold is starting to wonder where I keep disappearing to."

# The Low Tar\* One

\*As defined by H.M. Government in the United Kingdom

(IN MILLIGRAMS PER CIGARETTE)

High Tar	29 and over
Middle to High	23 - 28
Middle	17 - 22
Low to Middle	11 - 16
<b>LOW TAR</b>	<b>10 and under</b>



Rothmans of Pall Mall—World Leaders in Research